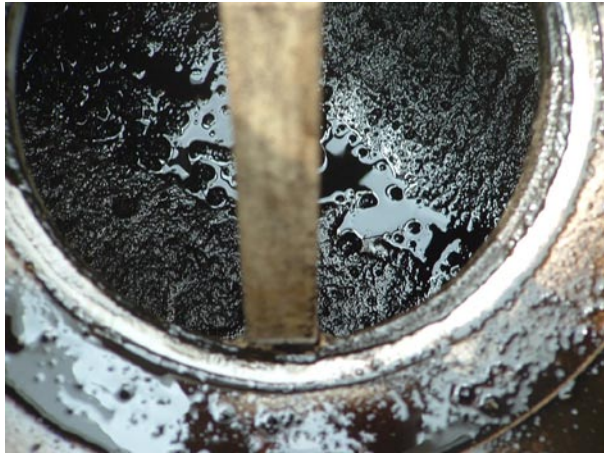


Series R100™ Coalescing Pipeline Filter Multiple Stage

Design Pressures to 3000 psig std.

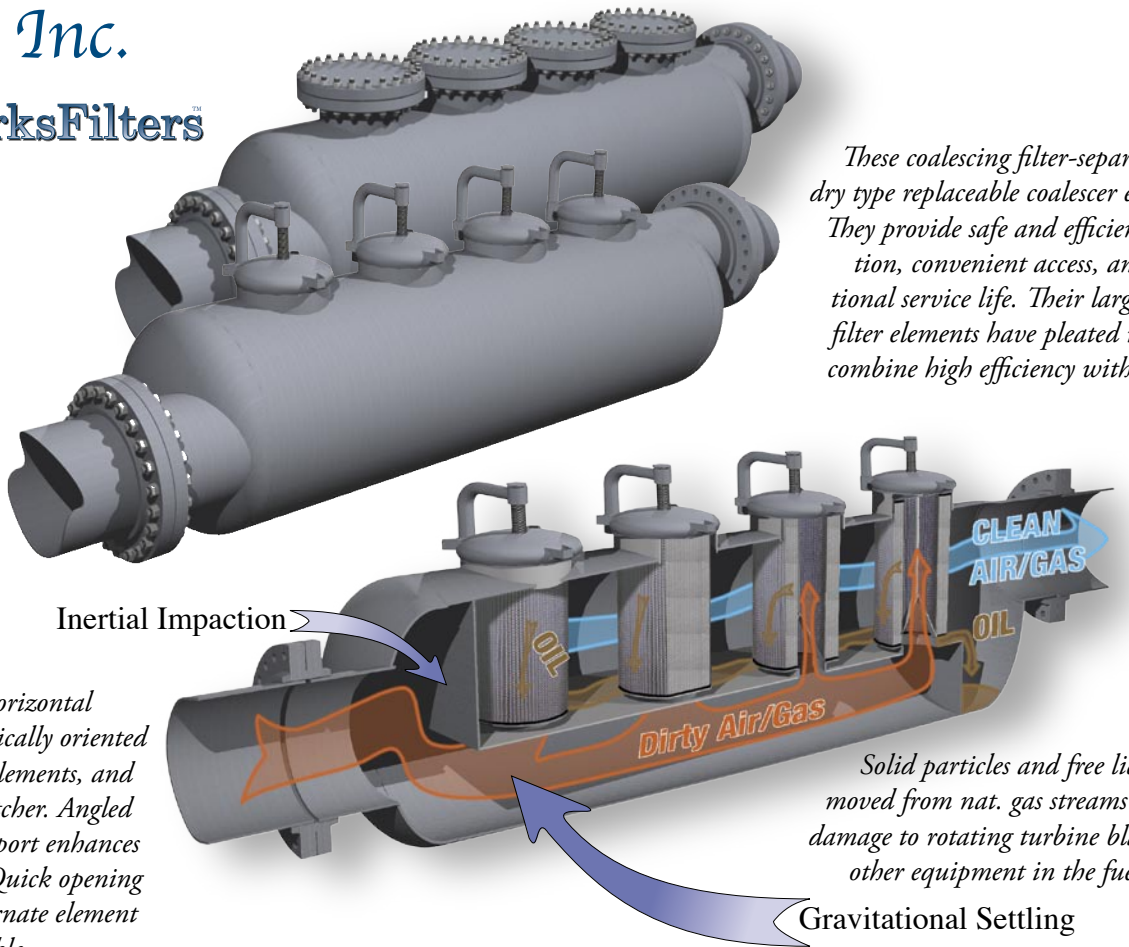


R100™ in foreground, competitor in background.



Internal dirty sump area (below element base plate).

Engineered for horizontal installation, vertically oriented coalescing filter elements, and integral Slug Catcher. Angled element base support enhances fluid drainage. Quick opening closures and alternate element stacks are available.



These coalescing filter-separators use dry type replaceable coalescer elements. They provide safe and efficient operation, convenient access, and exceptional service life. Their large rugged filter elements have pleated media to combine high efficiency with low ΔP.

Inertial Impaction

Solid particles and free liquids removed from nat. gas streams prevents damage to rotating turbine blades and other equipment in the fuel supply.

Gravitational Settling

Coal Bed Methane Filtration

Shawndra Products™ developed a new coalescing pipeline filter product (patent pending). This new R100™ series filter is a horizontal pipeline filter with extended surface area vertical elements. Element service life has been extended tenfold and more. Complete service can be accomplished with a single 3/4" adjustable wrench in less than 1.5 hours.

R-Series filters remove the solid particles and liquids from natural gas, vastly reducing or eliminating service to engines, turbines and other compressors, valves and meters. Superior filtration is achieved first through inertial impaction, secondly through gravitational settling, and thirdly through a nearly vertical coalescing multi-stage filter element with efficiencies of 0.03 micron and higher. Media has been independently lab tested using various oils as contaminants.



Out of service Horizontal unit

A Field Proven Filter Design, multiple units in service.

The largest natural gas supplier in the Appalachian basin recently installed Sparks™ R100™ coalescing pipeline filters at five coal bed methane operations in Virginia and West Virginia. The first two of these filter units have now been in continuous, service-free operation for six months and more. One unit (See image above) processes seven million cubic feet per day of natural gas, filtered at the manifold head of ten gas wells, to remove water, liquid mist, coal dust, and sand to protect two downstream Caterpillar engines and two compressors. R-Series filters remove the solid particles and liquids from natural gas, utilizing multi stage filtration technology vastly reducing maintenance service and downtime to compressors, engines, turbines and other gas fired equipment.

This same pipeline filter (See image above) replaced a competitive unit (See image above) that required seven 4" x 36" elements. The new Sparks Series R100 filter with only three elements had operated continuously for six months without needing any service saving this CBM producer seventy-five hours of remote field maintenance and over \$20,000 in replacement filter elements.

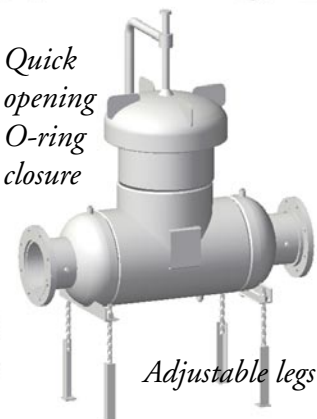
R100™ Mini

Low pressure bolted closure



Connection sizes 6" & smaller (Eliminates the need for (3) vessels in gas piping meter runs)

Quick opening O-ring closure



Adjustable legs available

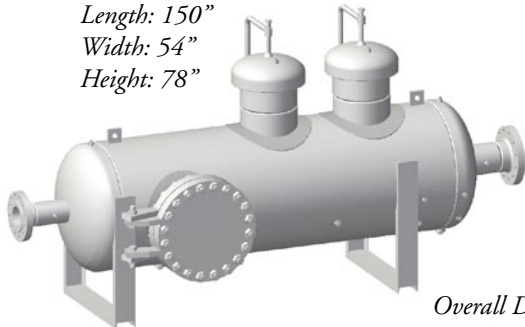
Shawndra Products™, Inc.
1514 Rochester Street
PO Box 488
Lima, NY 14485
585.624.4500

R100™ Multiple Stack Options

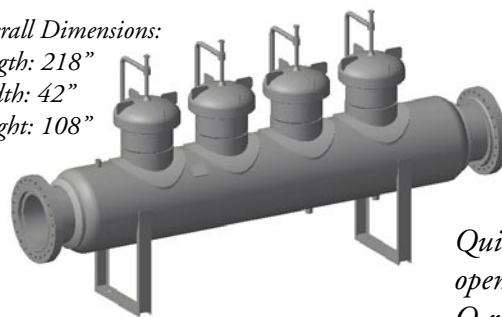
for high pressure/high flows
All units ASME U stamp with
National Board Registration

- Options include:
- Relief Valves
- Dump Valves
- Float Valves
- Sight Glass
- Ladders/Platform
- Assorted gages & piping
- Pads of mesh or directional separators
- One, Two, Three or Four stage high flow elements available

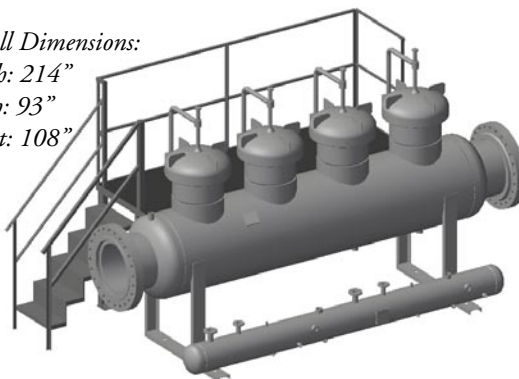
Overall Dimensions:
Length: 150"
Width: 54"
Height: 78"



Overall Dimensions:
Length: 218"
Width: 42"
Height: 108"

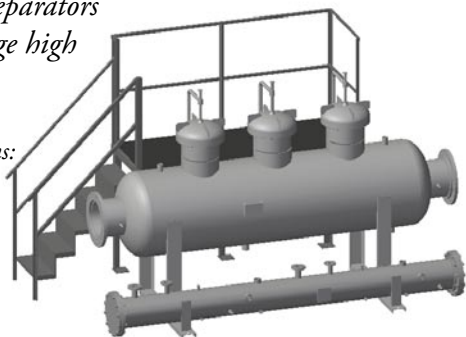


Overall Dimensions:
Length: 214"
Width: 93"
Height: 108"



2 Chamber sump tank

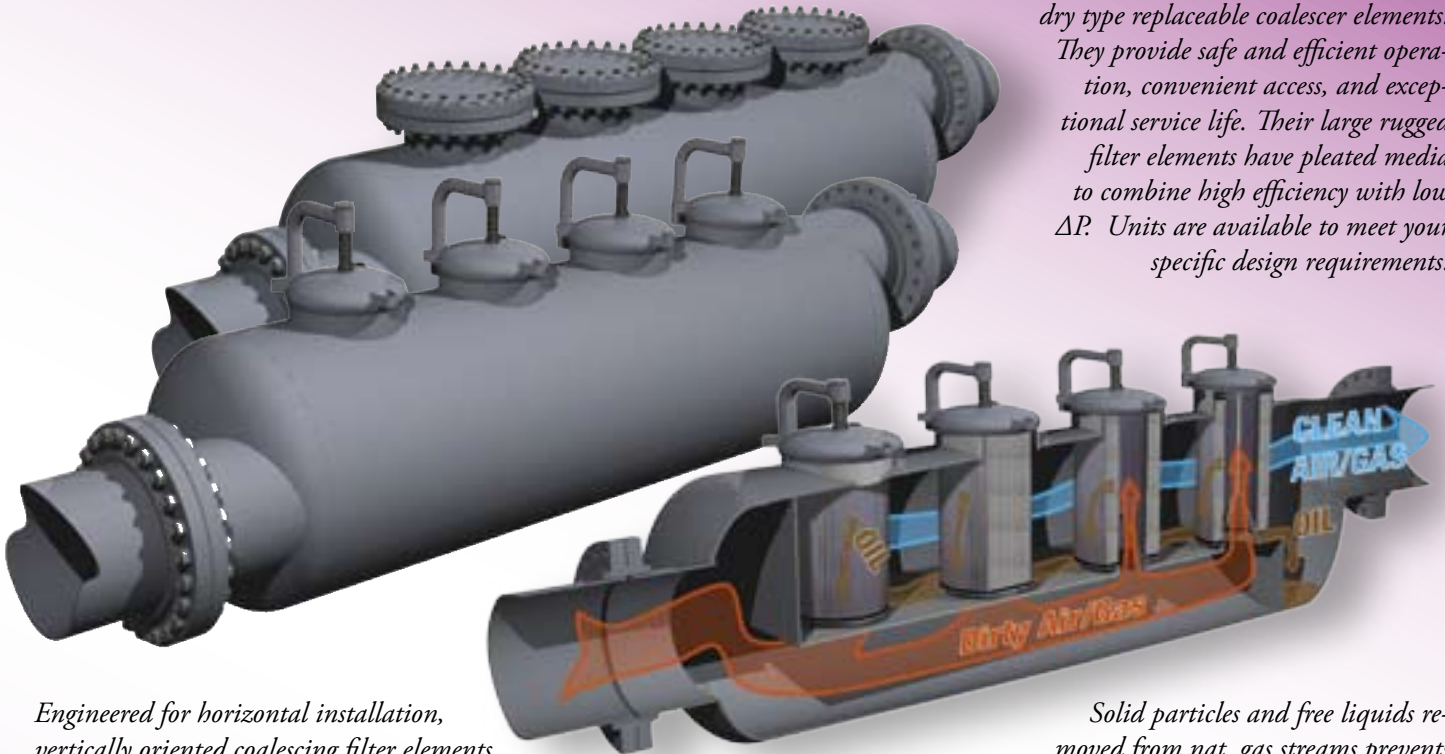
Overall Dimensions:
Length: 178"
Width: 93"
Height: 104"



Series R100 Horizontal/Vertical Coalescing Pipeline Filters Single Stage

Design Pressures to 3000 psig std.

These coalescing filter-separators use dry type replaceable coalescer elements. They provide safe and efficient operation, convenient access, and exceptional service life. Their large rugged filter elements have pleated media to combine high efficiency with low ΔP . Units are available to meet your specific design requirements.



Engineered for horizontal installation, vertically oriented coalescing filter elements, tangentially offset inlet and outlets with integral Slug Catcher. Angled element base support enhances fluid drainage. Quick opening closures and alternate element stacks are available.

Solid particles and free liquids removed from nat. gas streams prevents damage to rotating turbine blades and other equipment in the fuel supply.

Series R100 Horizontal Coalescing Pipeline Filters, Two Stage

Design Pressures to 3000 psig

These unique two stage coalescing filter-separators provide the ultimate in high flow, low ΔP , efficiency and convenient element change out.

Units are available for a wide variety of continuous-duty services.

