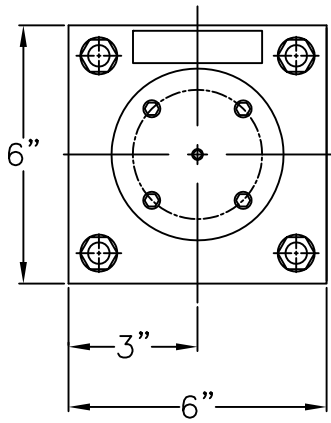


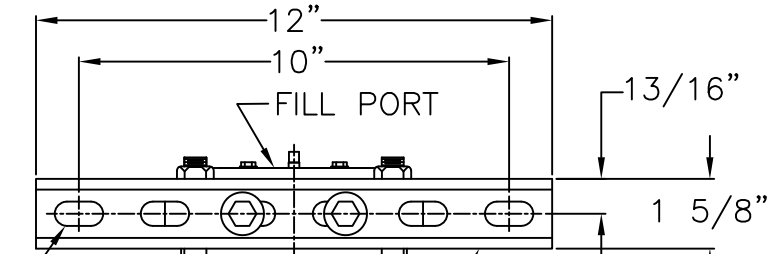
APP'L	DATE	LVL	ECN

NOTES:

- 1) MAXIMUM FLOW RATE: 35 CFM (AT 150 PSIG)
- 2) MAXIMUM WORKING PRESSURE: 200 PSI
- 3) DRYER MAXIMUM TEMPERATURE: 100°F
- 4) DRYER WEIGHT (WITH 15# INITIAL FILL OF DESICCANT): 32 LBS
- 5) DRYER COMES WITH INTERNAL AFTERFILTER (ACCESSED THROUGH FILL PORT).

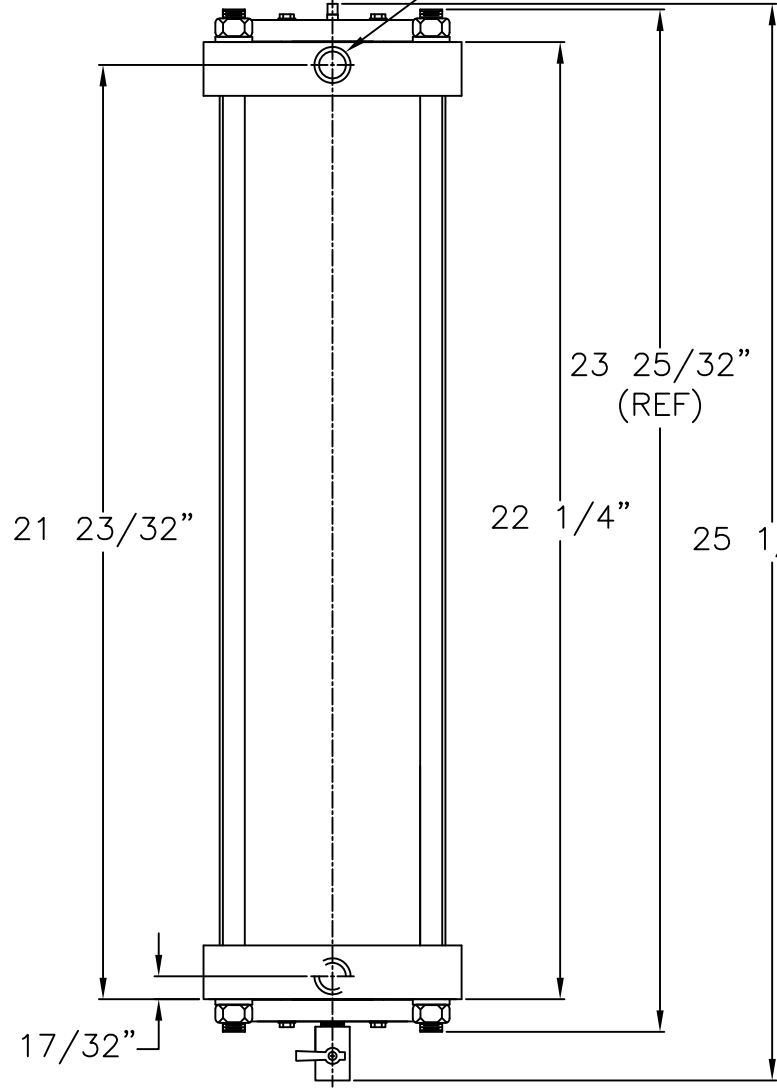


OUTLET
1/2" NPT CONN



9/16" X
1-1/8"
LG SLOT
(TYP)

MOUNTING
BRACKET
(THIS VIEW
ONLY)



INLET
1/2" NPT
CONN

DRAIN
1/4" BALL
VALVE

THIS DRAWING IS THE PROPERTY OF

VAN AIR INC.

AND IS SUBJECT TO RETURN UPON REQUEST. IT SHALL NOT BE COPIED OR DUPLICATED IN ANY MANNER AND SHALL NOT BE SUBMITTED TO OUTSIDE PARTIES FOR EXAMINATION WITHOUT THE CONSENT OF VAN AIR INC. IT SHALL BE USED FOR REFERENCE TO WORK UNDER CONTRACT OR PROPOSALS SUBMITTED BY VAN AIR INC. ONLY.

**MOISTURE BOSS
DELIQUESCENT DRYER**

PT#80-1547

DRWN BY: JJK	DATE: 3-25-15	DRWG No.	REV
CHECKED:	SCALE: NONE	SD-14761	

APP'L:

VAN AIR SYSTEMS